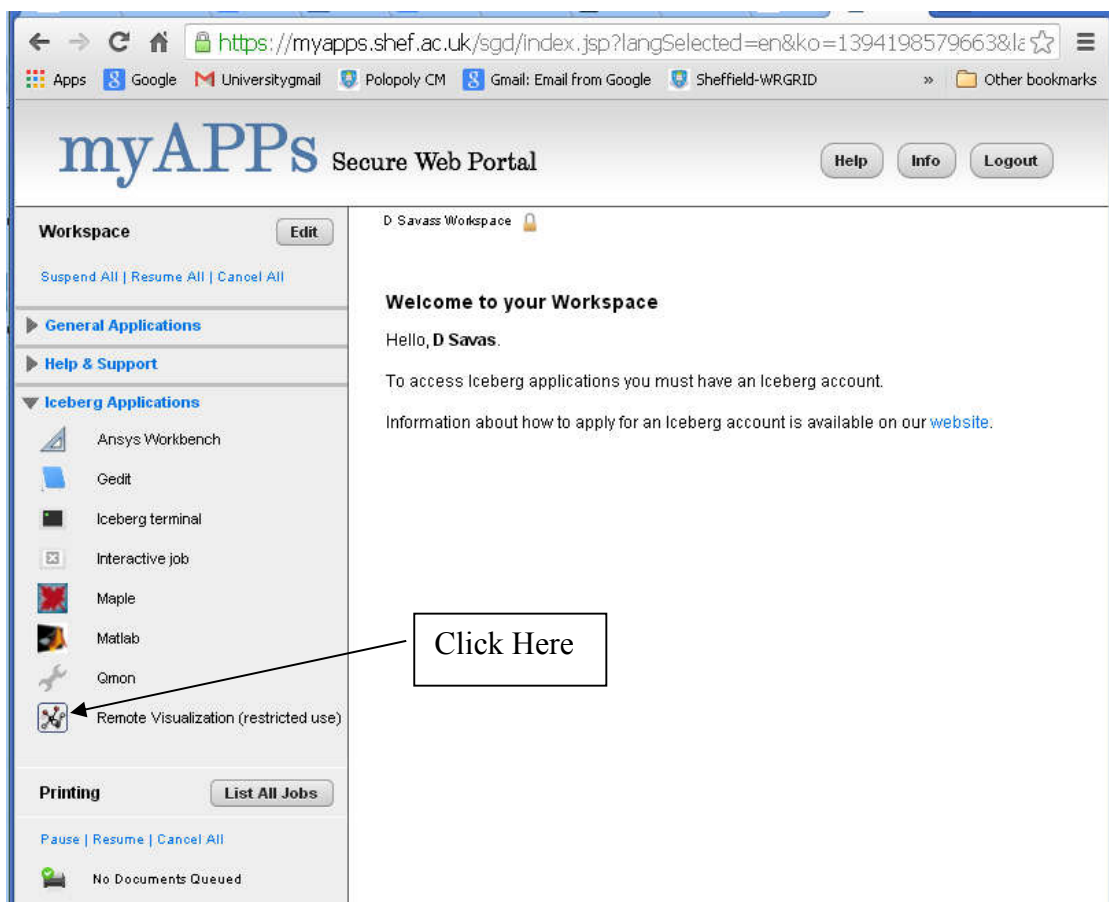


HOW TO USE THE ICEBERG REMOVE VISUALIZATION NODES

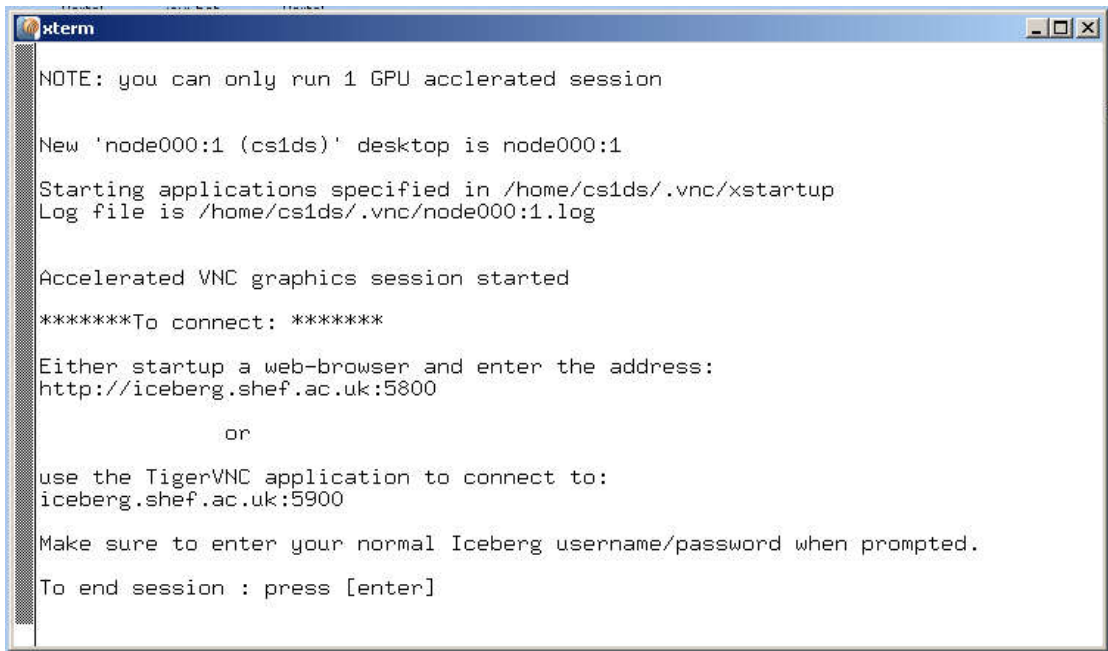
You will have to join the gpu visualisation group (gpu-vis) by emailing hpchub@sheffield.ac.uk Only the members of this group will have the privileges to access remote visualization described in this document.

Going in via the Applications Portal :

- 1- Startup your web browser,
- 2- Point your browser to the Sheffield Univ. Applications Portal (which is : <https://myapps.shef.ac.uk/sgd/index.jsp> and logon.
- 3- On the Portal click on the Remote Visualization Icon as shown below;



4- This should result in a terminal window which looks like below;



```
xterm
NOTE: you can only run 1 GPU accelerated session

New 'node000:1 (cs1ds)' desktop is node000:1

Starting applications specified in /home/cs1ds/.vnc/xstartup
Log file is /home/cs1ds/.vnc/node000:1.log

Accelerated VNC graphics session started

*****To connect: *****

Either startup a web-browser and enter the address:
http://iceberg.shef.ac.uk:5800

      or

use the TigerVNC application to connect to:
iceberg.shef.ac.uk:5900

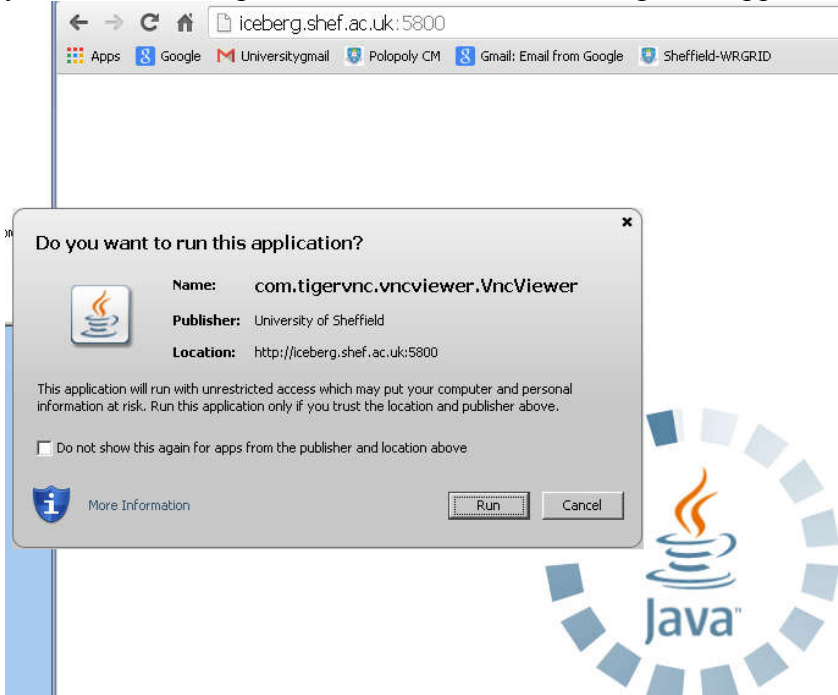
Make sure to enter your normal Iceberg username/password when prompted.

To end session : press [enter]
```

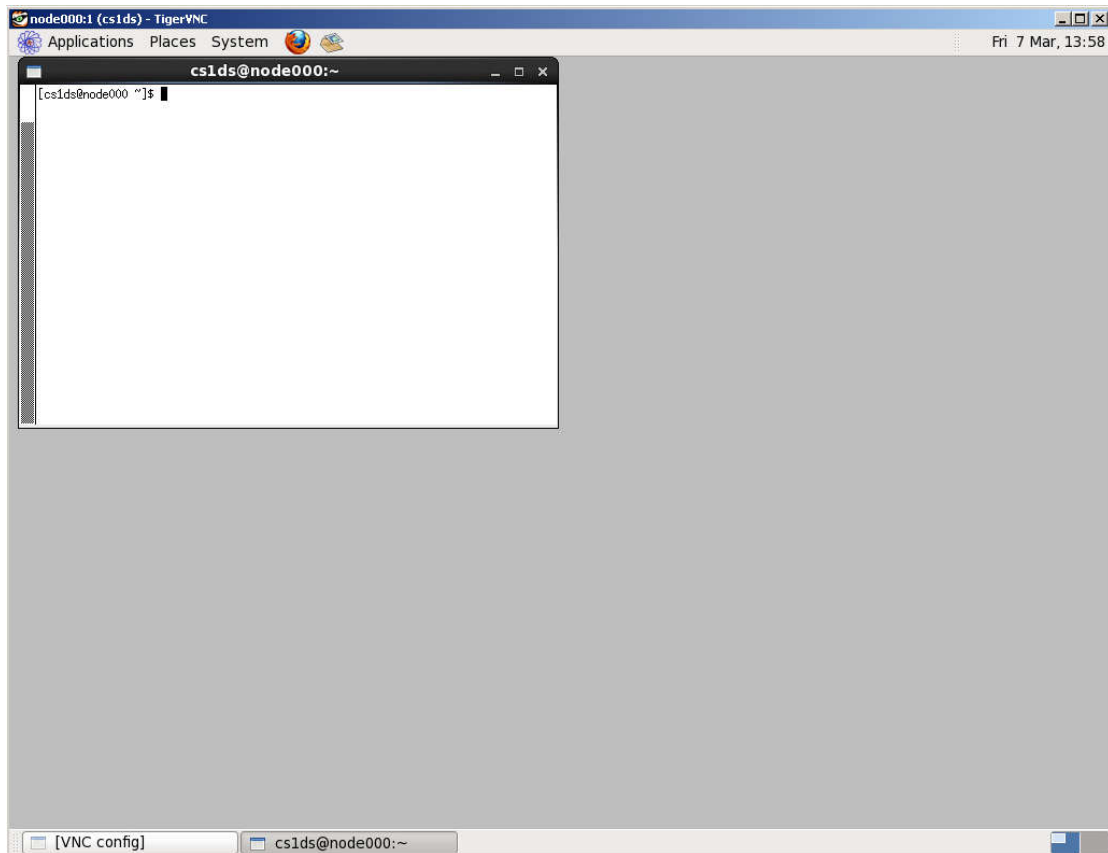
- 5- At this point you have two options these are;
- a) Startup a new browser window or tab and enter the address reported above (i.e http://iceberg-gateway.shef.ac.uk:port_number
 - b) or if you already have TigerVNC installed startup the TigerVNC viewer on your machine.

THE WEB BROWSER METHOD

6- If you use option 5(a) above, after entering your iceberg username and password, you will be asked permission to run the remote-tigervnc application.



7- Having accepted this request you will now have a window open which looks like;



which is in effect a workspace into iceberg with a command-window terminal already open. You can now type any command you would normally issue when logged onto an iceberg worker node, such as matlab, ansyswb, fluent, abaqus cae etc. All of these commands will open other windows where necessary. The only noticeable difference from other methods of XWindows access to iceberg being, most of these new windows will be opened inside the original workspace window.

THE TIGER-VNC LOCAL-CLIENT METHOD

If you do not wish to use the TigerVNC client remotely on iceberg by going in via the *Remote-Visualization-Icon*, an alternative method will be to use the TigerVNC client locally by installing it on your own machine. To achieve this you will need to download the TigerVNC client from the following URL and install it once.

<http://sourceforge.net/projects/tigervnc/>

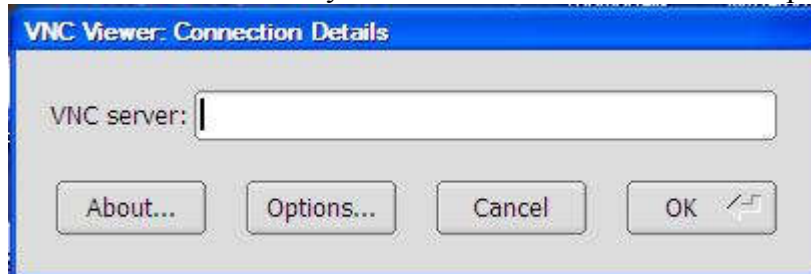
When installing TigerVNC, accept all the default offerings. Depending on the installation options chosen, if the VNC Client Server is not started yet it can be started via;

START > TigerVNC > VNC Server UserMode > Run VNC Server

Once you have established an ordinary terminal connection to iceberg you need to;

- on iceberg headnode terminal type; **qsh-vis**
- on your computer run the VNC Viewer via ;
START > TigerVNC > VNC Viewer

When VNC viewer runs you will see a connection window open up as shown below;



where;

you will need to enter in VNC server box

iceberg-gateway.shef.ac.uk:port_number

(port number is usually 5900) .

If you did not want to use the applications portal or you can not use it for any reason, 'such as Java problems' you can use another terminal emulator to establish your initial connection to iceberg [instead of steps (1) (2) and (3) above]. Terminal emulation software such as ssh, putty, exceed or xming can be used for this purpose. We find putty terminal emulator to be the easiest to install and reliable to use. Putty can be downloaded from <http://www.chiark.greenend.org.uk/~sgtatham/putty/>

Having connected to iceberg via a terminal emulator, you can type **qsh-vis** to establish a visualisation connection which equivalent to step (3) above.